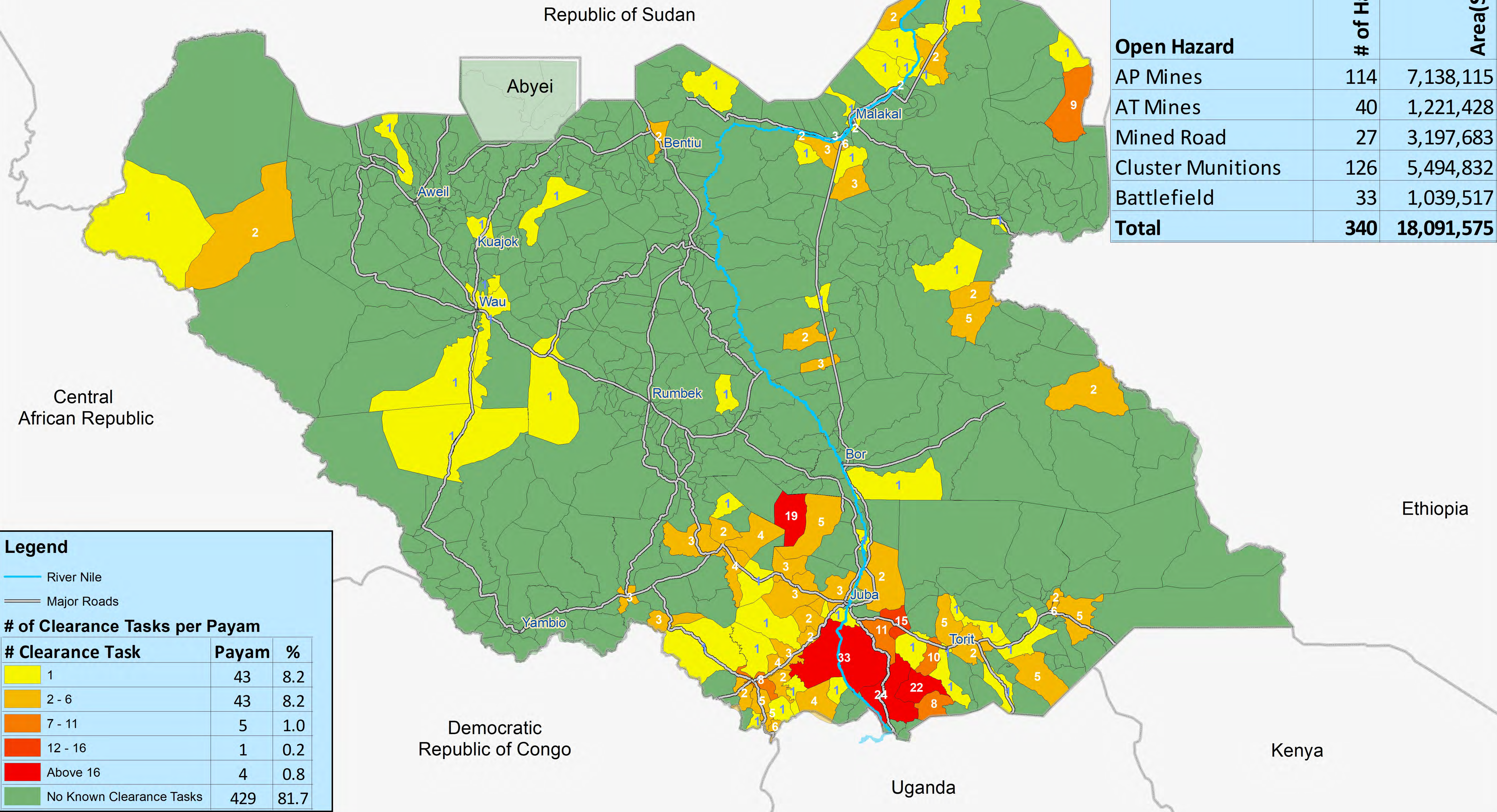


Remaining Hazardous Areas in South Sudan as of 31 March 2021



Situation Mapped by Number of Clearance Tasks per Payam



	# of Hazard	Area(Sqm)
Open Hazard		
AP Mines	114	7,138,115
AT Mines	40	1,221,428
Mined Road	27	3,197,683
Cluster Munitions	126	5,494,832
Battlefield	33	1,039,517
Total	340	18,091,575

Legend

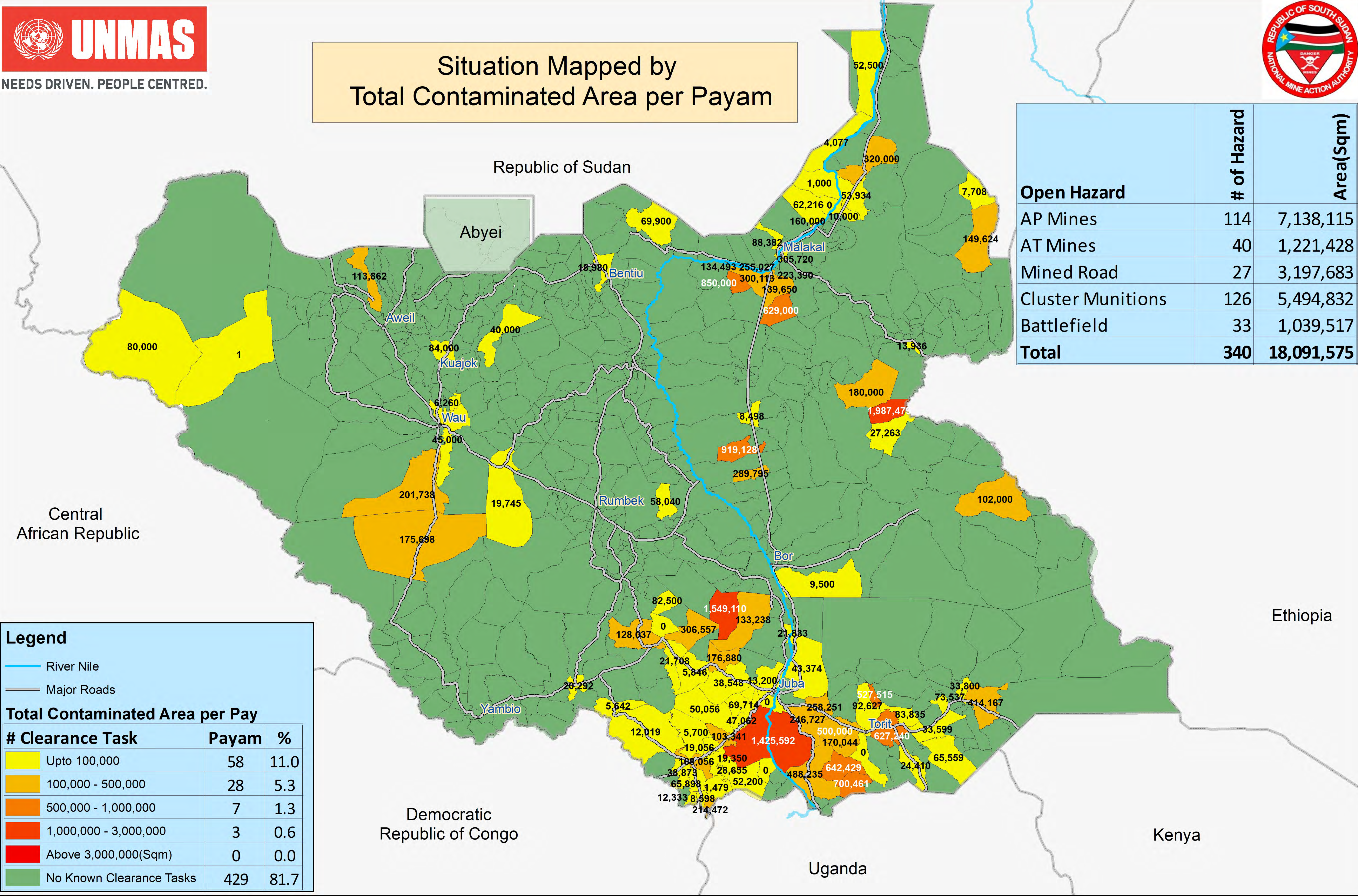
- River Nile
- Major Roads

# of Clearance Tasks per Payam		
# Clearance Task	Payam	%
1	43	8.2
2 - 6	43	8.2
7 - 11	5	1.0
12 - 16	1	0.2
Above 16	4	0.8
No Known Clearance Tasks	429	81.7

Remaining Hazardous Areas in South Sudan as of 31 March 2021



Situation Mapped by Total Contaminated Area per Payam



Open Hazard	# of Hazard	Area(Sqm)
AP Mines	114	7,138,115
AT Mines	40	1,221,428
Mined Road	27	3,197,683
Cluster Munitions	126	5,494,832
Battlefield	33	1,039,517
Total	340	18,091,575

Legend

- River Nile
- Major Roads

Total Contaminated Area per Pay

# Clearance Task	Payam	%
Upto 100,000	58	11.0
100,000 - 500,000	28	5.3
500,000 - 1,000,000	7	1.3
1,000,000 - 3,000,000	3	0.6
Above 3,000,000(Sqm)	0	0.0
No Known Clearance Tasks	429	81.7