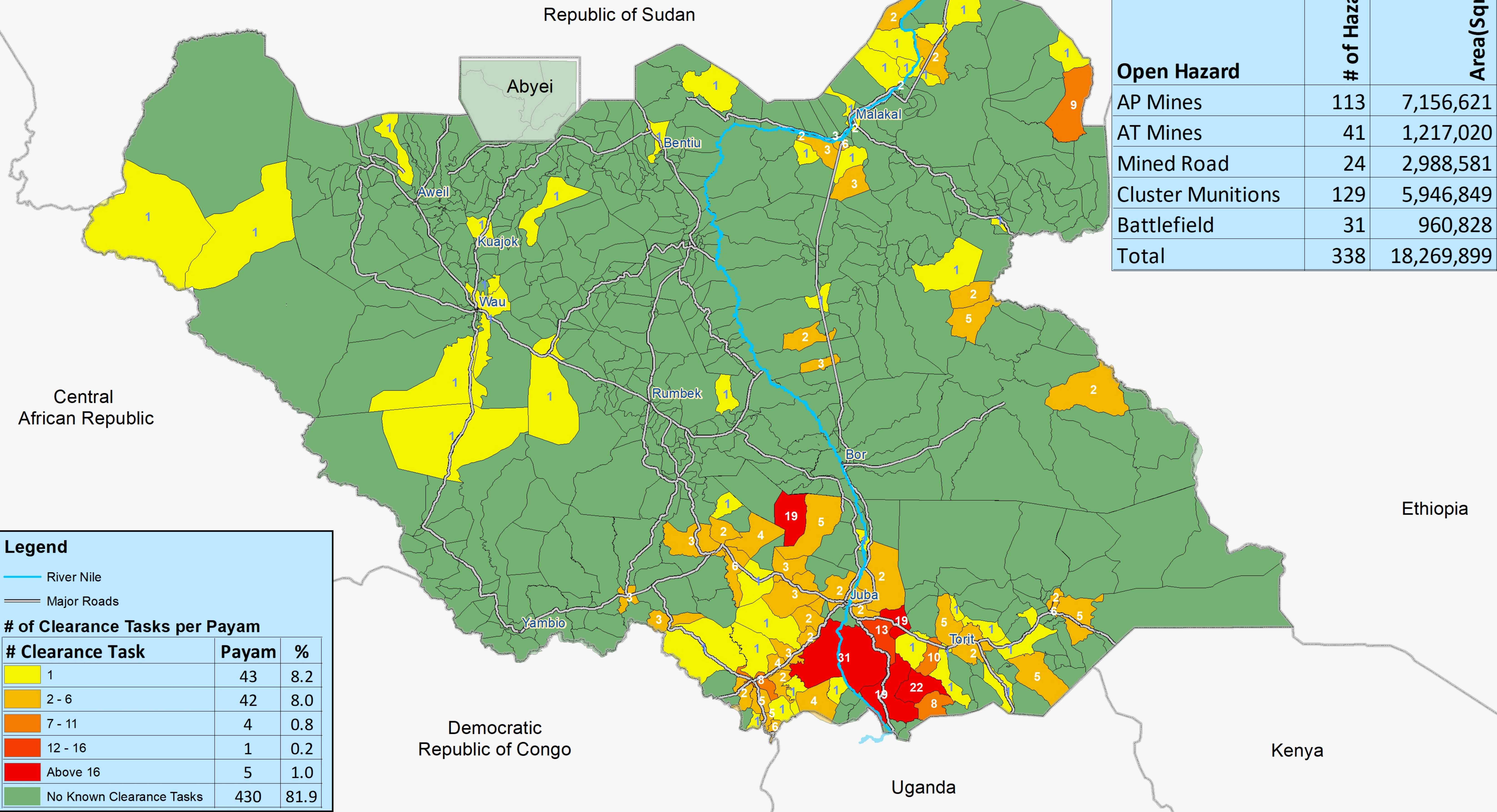


# Remaining Hazardous Areas in South Sudan as of 31 May 2021



Situation Mapped by Number of Clearance Tasks per Payam



Open Hazard	# of Hazard	Area(Sqm)
AP Mines	113	7,156,621
AT Mines	41	1,217,020
Mined Road	24	2,988,581
Cluster Munitions	129	5,946,849
Battlefield	31	960,828
<b>Total</b>	<b>338</b>	<b>18,269,899</b>

**Legend**

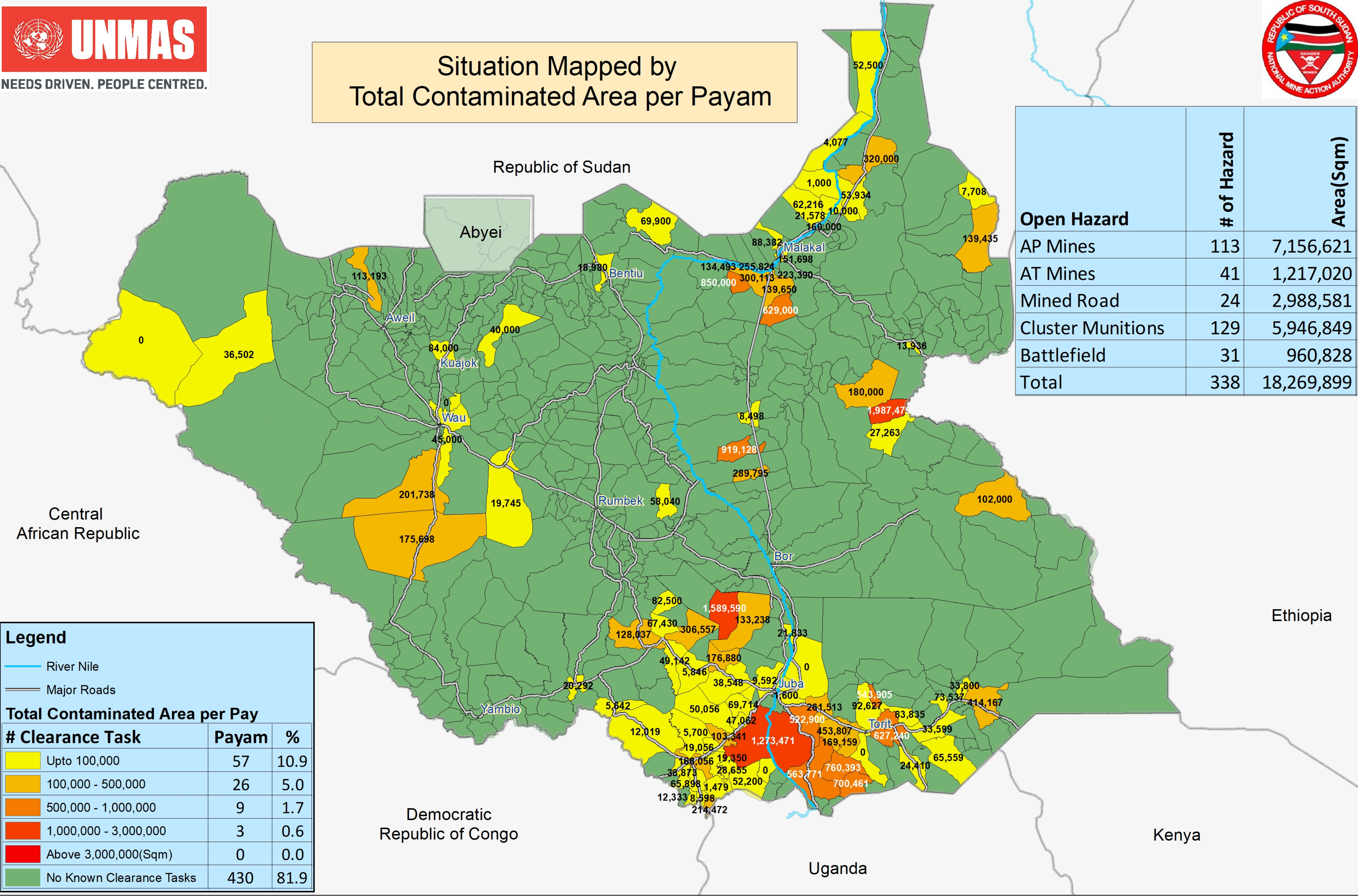
- River Nile
- Major Roads

# of Clearance Tasks per Payam		
# Clearance Task	Payam	%
1	43	8.2
2 - 6	42	8.0
7 - 11	4	0.8
12 - 16	1	0.2
Above 16	5	1.0
No Known Clearance Tasks	430	81.9

# Remaining Hazardous Areas in South Sudan as of 31 May 2021



Situation Mapped by Total Contaminated Area per Payam



Open Hazard	# of Hazard	Area(Sqm)
AP Mines	113	7,156,621
AT Mines	41	1,217,020
Mined Road	24	2,988,581
Cluster Munitions	129	5,946,849
Battlefield	31	960,828
<b>Total</b>	<b>338</b>	<b>18,269,899</b>

**Legend**

- River Nile
- Major Roads

**Total Contaminated Area per Pay**

# Clearance Task	Payam	%
Upto 100,000	57	10.9
100,000 - 500,000	26	5.0
500,000 - 1,000,000	9	1.7
1,000,000 - 3,000,000	3	0.6
Above 3,000,000(Sqm)	0	0.0
No Known Clearance Tasks	430	81.9